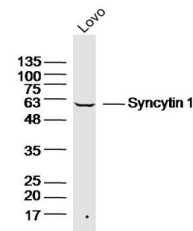


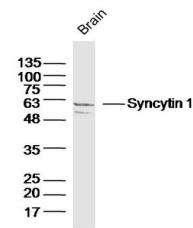
Product Datasheet

Syncytin 1 antibody (orb312961)

Description	Syncytin 1 antibody
Species/Host	Rabbit
Reactivity	Human, Mouse
Conjugation	Unconjugated
Tested Applications	WB
Immunogen	KLH conjugated synthetic peptide derived from human Syncytin 1 (451-538/538 aa)
Target	Syncytin 1
Preservatives	0.01M TBS(pH7.4) with 1% rAlbumin, 0.03% Proclin300 and 50% Glycerol.
Form/Appearance	Liquid
Concentration	1mg/ml
Storage	Maintain refrigerated at 2-8°C for up to 2 weeks. For long term storage store at -20°C in small aliquots to prevent freeze-thaw cycles.
Note	For research use only
Isotype	IgG
Clonality	Polyclonal
MW	33/58 kDa
Uniprot ID	Q9UQF0
Dilution Range	WB=1:500-2000
Expiration Date	12 months from date of receipt.



Western blot:Lovo(Human) Cell;Primary:An...



Western blot:Brain (Mouse);Primary:Anti- ...