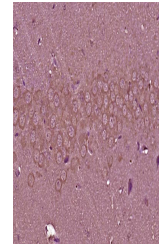


Product Datasheet

PEX6 antibody (orb312746)

Description	PEX6 antibody
Species/Host	Rabbit
Reactivity	Mouse
Conjugation	Unconjugated
Tested Applications	IHC-P
Immunogen	KLH conjugated synthetic peptide derived from human PEX6 (751-850/980 aa)
Target	PEX6
Preservatives	0.01M TBS(pH7.4) with 1% rAlbumin, 0.03% Proclin300 and 50% Glycerol.
Form/Appearance	Liquid: Liquid: 0.01M TBS(pH7.4) with 1% rAlbumin, 0.03% Proclin300 and 50% Glycerol.
Concentration	1mg/ml
Storage	Shipped at 4°C. Store at -20 °C for one year. Avoid repeated freeze/thaw cycles.
Note	For research use only
Isotype	IgG
Clonality	Polyclonal
Purity	affinity purified by Protein A
MW	104kDa
Uniprot ID	Q13608
Dilution Range	IHC-P=1:100-500
Expiration Date	12 months from date of receipt.



IHC-P image of rat brain tissue using PE...