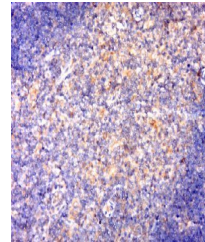


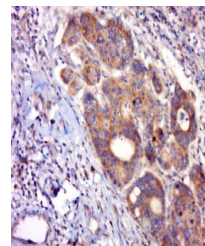
Product Datasheet

NFKB2(phospho-Ser866+Ser870) antibody (orb312393)

Description	NFKB2(phospho-Ser866+Ser870) antibody
Species/Host	Rabbit
Conjugation	Unconjugated
Tested Applications	ELISA, ICC, IF, IHC-Fr, IHC-P
Immunogen	KLH conjugated synthesised phosphopeptide derived from human NFKB2 around the phosphorylation site of Ser866 + Ser870 (ED(p-S)AYG(p-S)QS)
Target	Phospho-NFKB2 (Ser866+Ser870)
Preservatives	0.01M TBS(pH7.4) with 1% rAlbumin, 0.03% Proclin300 and 50% Glycerol.
Form/Appearance	Liquid
Concentration	1mg/ml
Storage	Shipped at 4°C. Store at -20 °C for one year. Avoid repeated freeze/thaw cycles.
Note	For research use only
Isotype	IgG
Clonality	Polyclonal
MW	100 kDa
Uniprot ID	Q00653
Expiration Date	12 months from date of receipt.



Immunohistochemical staining of mouse th...



Immunohistochemical staining of human ce...