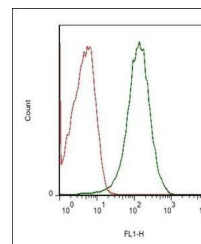


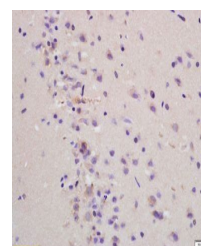
Product Datasheet

MCT1 antibody (orb312305)

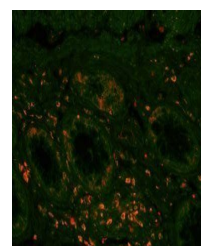
Description	MCT1 antibody
Species/Host	Rabbit
Reactivity	Human, Mouse, Rat
Conjugation	Unconjugated
Tested Applications	IF, IHC-Fr, IHC-P, WB
Immunogen	KLH conjugated synthetic peptide derived from human MCT1 (34-59/500 aa)
Target	MCT1/Malignant T cell amplified sequence 1
Preservatives	0.01M TBS(pH7.4) with 1% rAlbumin, 0.03% Proclin300 and 50% Glycerol.
Form/Appearance	Liquid
Concentration	1mg/ml
Storage	Shipped at 4°C. Store at -20 °C for one year. Avoid repeated freeze/thaw cycles.
Note	For research use only
Isotype	IgG
Clonality	Polyclonal
MW	55 kDa
Uniprot ID	P53985
Expiration Date	12 months from date of receipt.



Flow cytometric analysis of Mouse spleen...



Immunohistochemical staining of rat brai...



Immunohistochemical staining of human co...