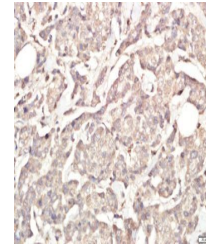


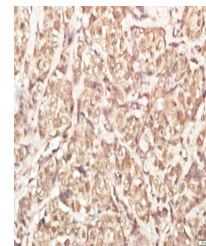
Product Datasheet

HSF1 (phospho-Ser326) antibody (orb312275)

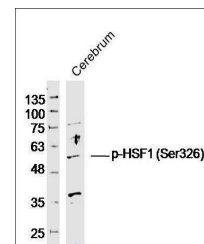
Description	HSF1 (phospho-Ser326) antibody
Species/Host	Rabbit
Reactivity	Human
Conjugation	Unconjugated
Tested Applications	FC, WB
Immunogen	KLH conjugated Synthesised phosphopeptide derived from human HSF1 around the phosphorylation site of Ser326 (L(p-S)PT)
Target	phospho-HSF1 (Ser326)
Preservatives	Preservative: 15mM Sodium Azide, Constituents: 1% rAlbumin, 0.01M PBS, pH 7.4
Form/Appearance	Liquid
Concentration	1mg/ml
Storage	Shipped at 4°C. Store at -20 °C for one year. Avoid repeated freeze/thaw cycles.
Note	For research use only
Isotype	IgG
Clonality	Polyclonal
MW	57 kDa
Uniprot ID	Q00613
Dilution Range	WB=1:500-2000, Flow-Cyt=1ug/Test, IHC-P=1:100-500, IHC-F=1:100-500, ICC=1:100-500, IF=1:100-500, ELISA=1:5000-10000
Expiration Date	12 months from date of receipt.



Immunohistochemical staining of human br...



Immunohistochemical staining of human br...



Western blot analysis of Mouse Cerebrum

...