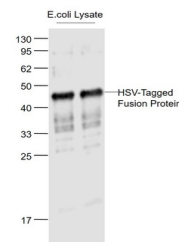


Product Datasheet

HSV tag antibody (orb312272)

Description	HSV tag antibody
Species/Host	Rabbit
Reactivity	All
Conjugation	Unconjugated
Tested Applications	WB
Immunogen	KLH conjugated synthetic peptide HSV tag (QPELAPEDPED)
Target	HSV tag
Preservatives	Preservative: 15mM Sodium Azide, Constituents: 1% rAlbumin, 0.01M PBS, pH 7.4
Form/Appearance	Liquid
Concentration	1mg/ml
Storage	Maintain refrigerated at 2-8°C for up to 2 weeks. For long term storage store at -20°C in small aliquots to prevent freeze-thaw cycles.
Note	For research use only
Isotype	IgG
Clonality	Polyclonal
Dilution Range	WB=1:1000-5000
Expiration Date	12 months from date of receipt.



Western blot: Lane 1: HSV-Tagged Fusion Protein