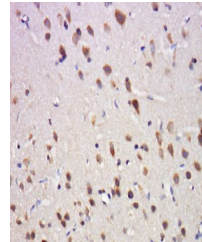


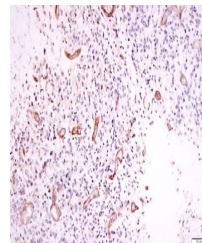
## Product Datasheet

# delta Opioid Receptor (phospho-Ser363) antibody (orb312225)

<b>Description</b>	delta Opioid Receptor (phospho-Ser363) antibody
<b>Species/Host</b>	Rabbit
<b>Reactivity</b>	Human, Mouse, Rat
<b>Conjugation</b>	Unconjugated
<b>Tested Applications</b>	WB
<b>Immunogen</b>	KLH conjugated Synthesised phosphopeptide derived from human delta Opioid Receptor around the phosphorylation site of Ser363 (TP(p-S)DG)
<b>Target</b>	Phospho-delta Opioid Receptor (Ser363)
<b>Preservatives</b>	Preservative: 15mM Sodium Azide, Constituents: 1% rAlbumin, 0.01M PBS, pH 7.4
<b>Form/Appearance</b>	Liquid
<b>Concentration</b>	1mg/ml
<b>Storage</b>	Shipped at 4°C. Store at -20 °C for one year. Avoid repeated freeze/thaw cycles.
<b>Note</b>	For research use only
<b>Isotype</b>	IgG
<b>Clonality</b>	Polyclonal
<b>MW</b>	40 kDa
<b>Uniprot ID</b>	<a href="#">P41143</a>
<b>Dilution Range</b>	WB=1:500-2000
<b>Expiration Date</b>	12 months from date of receipt.



Immunohistochemical staining of rat brai...



Immunohistochemical staining of human Ne...