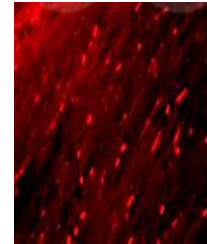


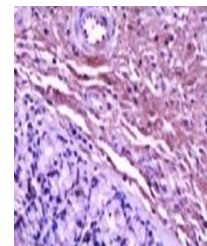
Product Datasheet

Collagen I antibody (orb312178)

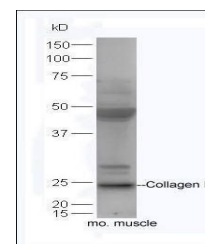
Description	Collagen I antibody
Species/Host	Rabbit
Reactivity	Canine, Human, Mouse, Rabbit, Rat
Conjugation	Unconjugated
Tested Applications	IHC-P, WB
Immunogen	KLH conjugated synthetic peptide derived from human Collagen I C-terminal propeptide (1321-1400/1464 aa)
Target	Collagen I
Preservatives	0.01M TBS(pH7.4) with 1% rAlbumin, 0.03% Proclin300 and 50% Glycerol.
Form/Appearance	Liquid
Concentration	1mg/ml
Storage	Shipped at 4°C. Store at -20 °C for one year. Avoid repeated freeze/thaw cycles.
Note	For research use only
Isotype	IgG
Clonality	Polyclonal
MW	130 kDa
Uniprot ID	P02452
Dilution Range	WB=1:500-2000, IHC-P=1:100-500
Expiration Date	12 months from date of receipt.



Immunofluorescence analysis of rabbit me...



Immunohistochemical staining of rat colo...



Western blot analysis of mouse muscle ly...