
Product Datasheet

Surfactant protein D/SFTPD Antibody (orb312143)

Description

Surfactant protein D/SFTPD Antibody

Species/Host

Rabbit

Reactivity

Human, Rat

Conjugation

Unconjugated

Tested Applications

ELISA, ICC, IHC, WB

Immunogen

A synthetic peptide corresponding to a sequence at the C-terminus of human Surfactant protein D (292-321aa RSAAENAALQQLVAKNEAAFLSMTD SKTE), different from the related mouse and rat sequences by eight amino acids.

Form/Appearance

Lyophilized

Concentration

Adding 0.2 ml of distilled water will yield a concentration of 500 µg/ml.

Storage

Store at -20°C for one year from date of receipt. After reconstitution, at 4°C for one month. It can also be aliquotted and stored frozen at -20°C for six months. Avoid repeated freeze-thaw cycles.

Note

For research use only

Application notes

Tested Species: In-house tested species with positive results. By Heat: Boiling the paraffin sections in 10mM citrate buffer, pH6.0, for 20mins is required for the staining of formalin/paraffin sections. Other applications have not been tested. Optimal dilutions should be determined by end users. . Add 0.2ml of distilled water will yield a concentration of 500ug/ml.

Isotype

Rabbit IgG

Clonality

Polyclonal

MW

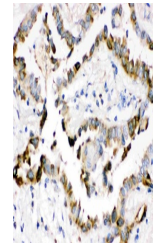
37728 MW

Uniprot ID
P35247
Expiration Date

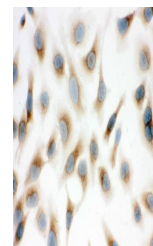
12 months from date of receipt.



WB analysis of Surfactant protein D usin...



IHC analysis of Surfactant protein D usi...



IHC analysis of Surfactant protein D usi...