
Product Datasheet

Isocitrate dehydrogenase/IDH1 Antibody (orb312127)

Description

Isocitrate dehydrogenase/IDH1 Antibody


Species/Host

Rabbit

Reactivity

Human, Mouse, Rat

Conjugation

Unconjugated

Tested Applications

FC, ICC, IF, IHC, IHC-Fr, WB

Immunogen

A synthetic peptide corresponding to a sequence at the C-terminus of human IDH1 (381-413aa KGLPNVQRSDYLNTFFEMDKLGENLKIKLAQAK), different from the related mouse and rat sequences by one amino acid.

Form/Appearance

Lyophilized

Concentration

Adding 0.2 ml of distilled water will yield a concentration of 500 µg/ml.

Storage

Store at -20°C for one year from date of receipt. After reconstitution, at 4°C for one month. It can also be aliquotted and stored frozen at -20°C for six months. Avoid repeated freeze-thaw cycles.

Note

For research use only

Application notes

Tested Species: In-house tested species with positive results. By Heat: Boiling the paraffin sections in 10mM citrate buffer, pH6.0, for 20mins is required for the staining of formalin/paraffin sections. Other applications have not been tested. Optimal dilutions should be determined by end users. . Add 0.2ml of distilled water will yield a concentration of 500ug/ml.

Isotype

Rabbit IgG

Clonality

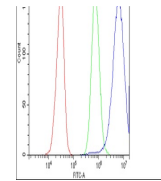
Polyclonal

MW

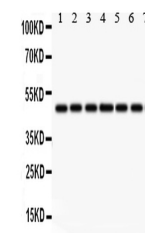
46659 MW

Uniprot ID
075874
Expiration Date

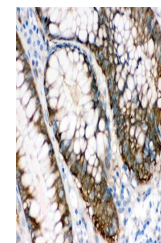
12 months from date of receipt.



Flow Cytometry analysis of HepG2 cells u...



WB analysis of IDH1 using anti-IDH1 anti...



IHC analysis of IDH1 using anti-IDH1 ant...