

Product Datasheet

EWSR1 Antibody (orb312111)

Description

EWSR1 Antibody

Species/Host

Rabbit

Reactivity

Human, Mouse, Rat

Conjugation

Unconjugated

Tested Applications

FC, ICC, IF, IHC, IHC-Fr, WB

Immunogen

A synthetic peptide corresponding to a sequence in the middle region of human EWSR1 (369-399aa NDSVTLLDDLADFFKQCGVVKMKNRTGQPMIH), different from the related mouse sequence by one amino acid.

Form/Appearance

Lyophilized

Concentration

Adding 0.2 ml of distilled water will yield a concentration of 500 µg/ml.

Storage

Store at -20°C for one year from date of receipt. After reconstitution, at 4°C for one month. It can also be aliquotted and stored frozen at -20°C for six months. Avoid repeated freeze-thaw cycles.

Note

For research use only

Application notes

Tested Species: In-house tested species with positive results.
 By Heat: Boiling the paraffin sections in 10mM citrate buffer, pH6.0, for 20mins is required for the staining of formalin/paraffin sections. Other applications have not been tested. Optimal dilutions should be determined by end users. .
 Add 0.2ml of distilled water will yield a concentration of 500ug/ml.

Isotype

Rabbit IgG

Clonality

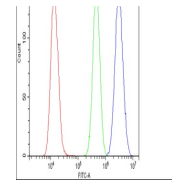
Polyclonal

MW

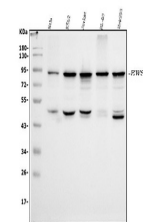
68478 MW

Uniprot ID
[Q01844](https://www.uniprot.org/uniprot/Q01844)
Expiration Date

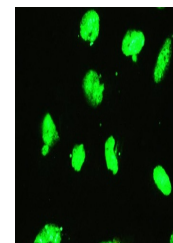
12 months from date of receipt.



Flow Cytometry analysis of U2OS cells us...



WB analysis of EWSR1 using anti-EWSR1 an...



IF analysis of EWSR1 using anti-EWSR1 an...