

Product Datasheet

ATAD2 Antibody (orb31113)

Description

ATAD2 Antibody

Species/Host

Rabbit

Reactivity

Human, Mouse, Porcine, Rat

Conjugation

Unconjugated

Tested Applications

ELISA, ICC, IF, IHC-P

Immunogen

KLH conjugated synthetic peptide derived from human ATAD2. Please contact us for the exact immunogen sequence. The peptide is available as orb374792.

Target

ATAD2

Form/Appearance

10 mM PBS, 0.02% sodium azide

Concentration

- 100 µg (in 200 µl): 0.5 mg/ml- 200 µg (in 400 µl): 0.5 mg/ml

Storage

Aliquot and store at -20°C or -80°C. Avoid repeated freeze/thaw cycles.

Note

For research use only

Isotype

IgG

Clonality

Polyclonal

Purity

Polyclonal antibodies are purified by peptide affinity chromatography

MW

159 kDa

Uniprot ID

[Q6PL18](#)

NCBI

[014109](#), [054828](#)

Entrez

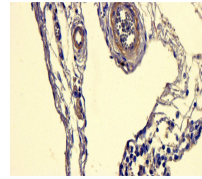
[29028](#)

Dilution Range

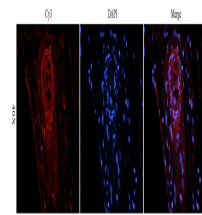
IHC-P: 1:500, IF/ICC: 1:200

Expiration Date

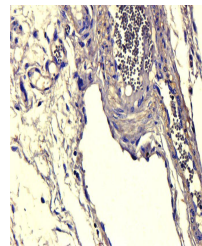
12 months from date of receipt.



IHC-P image of pig lung tissue using ant...



IF analysis of pig lung tissue using ATA...



Immunohistochemical staining of pig lung...