

---

## Product Datasheet

### Stefin B/CSTB Antibody (orb308860)

**Description**

Stefin B/CSTB Antibody

**Species/Host**

Rabbit

**Reactivity**

Human

**Conjugation**

Unconjugated

**Tested**

ELISA, FC, ICC, IF, IHC, WB

**Applications**
**Immunogen**

E. coli-derived human Stefin B recombinant protein (Position: M1-F98). Human Stefin B shares 78.6 % amino acid (aa) sequence identity with both mouse and rat Stefin B.

**Form/Appearance**

Lyophilized

**Concentration**

Adding 0.2 ml of distilled water will yield a concentration of 500 µg/ml.

**Storage**

Store at -20°C for one year from date of receipt. After reconstitution, at 4°C for one month. It can also be aliquotted and stored frozen at -20°C for six months. Avoid repeated freeze-thaw cycles.

**Note**

For research use only

**Application notes**

Tested Species: In-house tested species with positive results. By Heat: Boiling the paraffin sections in 10mM citrate buffer, pH6.0, for 20mins is required for the staining of formalin/paraffin sections. Other applications have not been tested. Optimal dilutions should be determined by end users. . Add 0.2ml of distilled water will yield a concentration of 500ug/ml.

**Isotype**

Rabbit IgG

**Clonality**

Polyclonal

**MW**

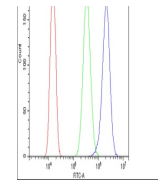
11140 MW

**Uniprot ID**
**P04080**
**Dilution Range**

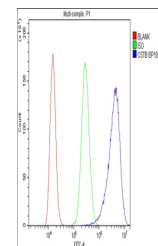
Western blot, 0.1-0.5µg/ml, Human Immunohistochemistry (Paraffin-embedded Section), 0.5-1µg/ml, Human, By Heat Immunohistochemistry (Frozen Section), 0.5-1µg/ml, Human Immunocytochemistry, 0.5-1µg/ml, Human Flow Cytometry, 1-3µg/1x10<sup>6</sup> cells, Human ELISA , 0.1-0.5µg/ml, Human, -

**Expiration Date**

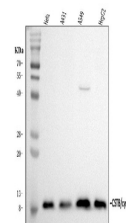
12 months from date of receipt.



Flow Cytometry analysis of U2OS cells us...



Flow Cytometry analysis of A431 cells us...



WB analysis of Stefin B using anti-Stefi...