

---

## Product Datasheet

### Cytochrome P450 1A2/CYP1A2 Antibody (orb308840)

**Description**

Cytochrome P450 1A2/CYP1A2 Antibody

**Species/Host**

Rabbit

**Reactivity**

Human, Mouse, Rat

**Conjugation**

Unconjugated

**Tested Applications**

IHC, WB

**Immunogen**

E.coli-derived human CYP1A2 recombinant protein (Position: H185-D320). Human CYP1A2 shares 69.9% and 72.1% amino acid (aa) sequence identity with mouse and rat CYP1A2, respectively.

**Form/Appearance**

Lyophilized

**Concentration**

Adding 0.2 ml of distilled water will yield a concentration of 500 µg/ml.

**Storage**

Store at -20°C for one year from date of receipt. After reconstitution, at 4°C for one month. It can also be aliquotted and stored frozen at -20°C for six months. Avoid repeated freeze-thaw cycles.

**Note**

For research use only

**Application notes**

Tested Species: In-house tested species with positive results. Predicted Species: Species predicted to be fit for the product based on sequence similarities. By Heat: Boiling the paraffin sections in 10mM citrate buffer, pH6.0, for 20mins is required for the staining of formalin/paraffin sections. Other applications have not been tested. Optimal dilutions should be determined by end users. . Add 0.2ml of distilled water will yield a concentration of 500ug/ml.

**Isotype**

Rabbit IgG

**Clonality**

Polyclonal

**MW**

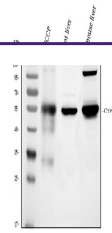
58294 MW

**Uniprot ID**
**P05177**
**Sensitivity**

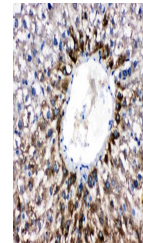
&gt; 5000 cells

**Expiration Date**

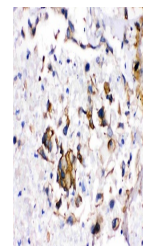
12 months from date of receipt.



WB analysis of CYP1A2 using anti-CYP1A2 ...



IHC analysis of CYP1A2 using anti-CYP1A2...



IHC analysis of CYP1A2 using anti-CYP1A2...