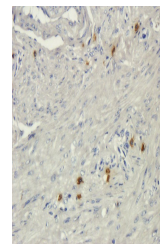


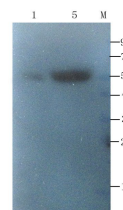
Product Datasheet

ompF antibody (orb308741)

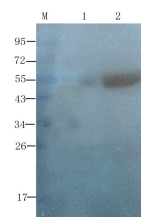
Description	ompF antibody
Species/Host	Rabbit
Reactivity	E. coli, Human
Conjugation	Unconjugated
Tested Applications	IHC-P, WB
Immunogen	KLH conjugated synthetic peptide derived from human ompF. Please contact us for the exact immunogen sequence. The peptide is available as orb374895.
Target	ompF. The antibody detects endogenous levels of ompF
Form/Appearance	10 mM PBS, 0.02% sodium azide
Concentration	- 100 µg (in 200 µl): 0.5 mg/ml- 200 µg (in 400 µl): 0.5 mg/ml
Storage	Store at 4°C for up to two weeks. For long term storage, aliquot and store at -20°C, avoid freeze/thaw cycles.
Note	For research use only
Isotype	IgG
Clonality	Polyclonal
Purity	Polyclonal antibodies are purified by peptide affinity chromatography
MW	39 kDa
Dilution Range	WB: 1:200-2000
Expiration Date	12 months from date of receipt.



IHC-P image of human endometrial cancer ...



WB analysis of human mammary fibroma (la...



Western blot analysis of human mammary f...