
Product Datasheet

Substance P antibody (orb308740)

Description

Substance P antibody

Species/Host

Rabbit

Reactivity

Human, Mouse, Rat

Conjugation

Unconjugated

Tested

ELISA, ICC, IF, IHC-P, WB

Applications
Immunogen

KLH conjugated synthetic peptide derived from human Substance P. Please contact us for the exact immunogen sequence. The peptide is available as orb374894.

Target

Substance P. The antibody detects endogenous levels of Substance P

Form/Appearance

Liquid: 10 mM PBS, pH 7.4 with 10 mg/ml rAlbumin, 0.03% Proclin 300 and 25% glycerol

Concentration

- 100 µg (in 200 µl): 0.5 mg/ml- 200 µg (in 400 µl): 0.5 mg/ml

Storage

Store at 4°C for up to two weeks. For long term storage, aliquot and store at -20°C, avoid freeze/thaw cycles.

Note

For research use only

Isotype

IgG

Clonality

Polyclonal

Purity

Polyclonal antibodies are purified by peptide affinity chromatography

MW

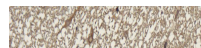
14 kDa

Uniprot ID
[P41539](#), [P06767](#), [P20366](#)
NCBI
[013998](#), [21](#), [054704](#), [11](#)
Entrez
[6863](#)
Dilution Range

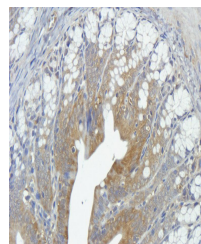
IF/ICC: 1:100-800, IHC-P: 1:100-800

Expiration Date

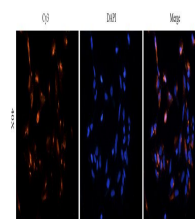
12 months from date of receipt.



Immunohistochemical staining of rat spin...



IHC-P image of rat colon tissue using an...



Immunofluorescence image of human u251 c...