

---

## Product Datasheet

### EGFR isoform a variant antibody (orb308736)

**Description**

EGFR isoform a variant antibody

**Species/Host**

Rabbit

**Reactivity**

Human, Mouse, Porcine, Rat

**Conjugation**

Unconjugated

**Tested**

ELISA, ICC, IF, IHC-P, WB

**Applications**
**Immunogen**

KLH conjugated synthetic peptide derived from human EGFR isoform a variant. Please contact us for the exact immunogen sequence. The peptide is available as orb374890.

**Target**

EGFR isoform a variant. The antibody detects endogenous levels of EGFR isoform a variant

**Form/Appearance**

Liquid: 10 mM PBS, pH 7.4 with 10 mg/ml rAlbumin, 0.03% Proclin 300 and 25% glycerol

**Concentration**

- 100 µg (in 200 µl): 0.5 mg/ml- 200 µg (in 400 µl): 0.5 mg/ml

**Storage**

Store at 4°C for up to two weeks. For long term storage, aliquot and store at -20°C, avoid freeze/thaw cycles.

**Note**

For research use only

**Isotype**

IgG

**Clonality**

Polyclonal

**Purity**

Polyclonal antibodies are purified by peptide affinity chromatography

**MW**

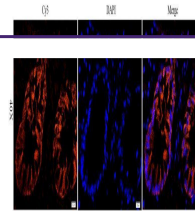
120 kDa

**Uniprot ID**
[Q9EQ09](#), [P00533](#), [O70156](#)
**NCBI**
[005219](#), [005228](#), [31](#), [21](#)
**Entrez**
[1956](#)
**Dilution Range**

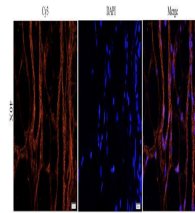
IHC-P: 1:100-500, WB: 1:50-300

**Expiration Date**

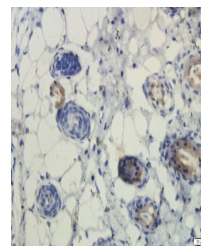
12 months from date of receipt.



Immunofluorescence image of pig large intestine tissue ...



IF image of pig large intestine tissue ...



IHC-P image of mouse skin tissue using a...