
Product Datasheet

CD35 antibody (orb308735)

Description

CD35 antibody

Species/Host

Rabbit

Reactivity

Human, Mouse, Rat

Conjugation

Unconjugated

Tested Applications

ELISA, IHC-P

Immunogen

KLH conjugated synthetic peptide derived from human CD35. Please contact us for the exact immunogen sequence. The peptide is available as orb374889.

Target

CD35. The antibody detects endogenous levels of CD35

Form/Appearance

Liquid: 10 mM PBS, pH 7.4 with 10 mg/ml rAlbumin, 0.03% Proclin 300 and 25% glycerol

Concentration

- 100 µg (in 200 µl): 0.5 mg/ml- 200 µg (in 400 µl): 0.5 mg/ml

Storage

Store at 4°C for up to two weeks. For long term storage, aliquot and store at -20°C, avoid freeze/thaw cycles.

Note

For research use only

Isotype

IgG

Clonality

Polyclonal

Purity

Polyclonal antibodies are purified by peptide affinity chromatography

MW

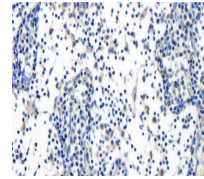
274 kDa

Uniprot ID
[P17927](#)
NCBI
[21, 000573](#), [31, 000564](#)
Entrez
[1378](#)
Dilution Range

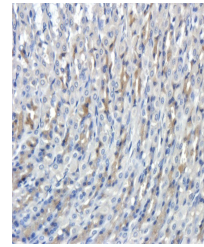
IHC-P: 1:100-500

Expiration Date

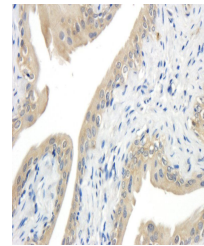
12 months from date of receipt.



IHC-P staining of rat lymph node tissue ...



Immunohistochemical staining of paraffin...



Immunohistochemical staining of rat lymph...