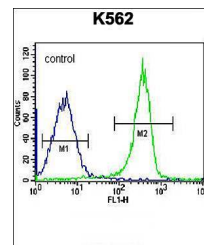
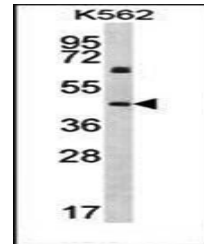


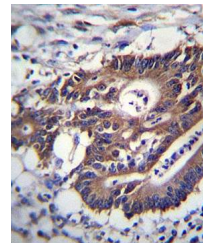
Product Datasheet

Cytokeratin 12 antibody (orb30759)

Description	Rabbit polyclonal antibody to Cytokeratin 12
Species/Host	Rabbit
Reactivity	Human, Mouse, Rat
Conjugation	Unconjugated
Tested Applications	FC, IHC-P, WB
Immunogen	Synthetic Peptide
Target	KRT12
Form/Appearance	Purified polyclonal antibody supplied in PBS with 0.09% (W/V) sodium azide. This antibody is purified through a protein A column, followed by peptide affinity purification.
Storage	Maintain refrigerated at 2-8°C for up to 2 weeks. For long term storage store at -20°C in small aliquots to prevent freeze-thaw cycles
Note	For research use only
Isotype	Rabbit IgG
Clonality	Polyclonal
MW	53511
Uniprot ID	Q99456
NCBI	NP_000214.1
Dilution Range	WB: 1:1000, IHC-P: 1:10-50, FACS: 1:25
Expiration Date	12 months from date of receipt.



Flow cytometric analysis of KRT12 antibody...



Immunohistochemical analysis of formalin...