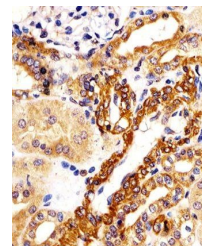
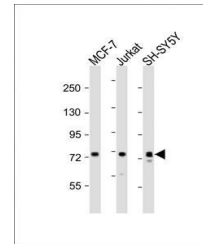


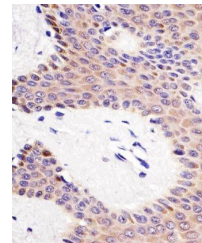
Product Datasheet

KIF22 antibody (orb306750)

Description	Rabbit polyclonal antibody to KIF22
Species/Host	Rabbit
Reactivity	Human
Conjugation	Unconjugated
Tested Applications	IF, IHC-P, WB
Target	KIF22
Form/Appearance	Purified polyclonal antibody supplied in PBS with 0.09% (W/V) sodium azide. This antibody is purified through a protein A column, followed by peptide affinity purification.
Storage	Maintain refrigerated at 2-8°C for up to 2 weeks. For long term storage store at -20°C in small aliquots to prevent freeze-thaw cycles
Note	For research use only
Isotype	Rabbit IgG
Clonality	Polyclonal
MW	73262
Uniprot ID	Q14807
Dilution Range	WB: 1:2000
Expiration Date	12 months from date of receipt.



Immunohistochemical staining of human ki...



Immunohistochemical staining of human sk...