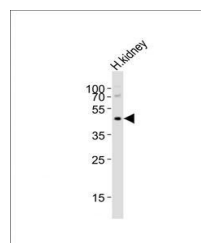
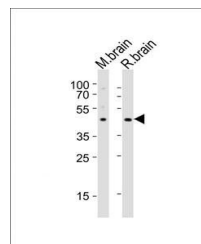


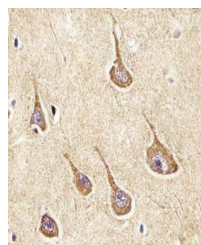
Product Datasheet

NPY2R antibody (orb306464)

| | |
|----------------------------|--|
| Description | Rabbit polyclonal antibody to NPY2R |
| Species/Host | Rabbit |
| Reactivity | Human, Mouse, Rat |
| Conjugation | Unconjugated |
| Tested Applications | FC, IHC, WB |
| Target | NPY2R |
| Form/Appearance | Purified polyclonal antibody supplied in PBS with 0.09% (W/V) sodium azide. This antibody is purified through a protein A column, followed by peptide affinity purification. |
| Storage | Maintain refrigerated at 2-8°C for up to 2 weeks. For long term storage store at -20°C in small aliquots to prevent freeze-thaw cycles |
| Note | For research use only |
| Isotype | Rabbit IgG |
| Clonality | Polyclonal |
| MW | 42731 |
| Uniprot ID | P49146 |
| Dilution Range | WB: 1:2000, WB: 1:1000 |
| Expiration Date | 12 months from date of receipt. |



Western blot analysis of human kidney ly...



Immunohistochemical staining of human br...