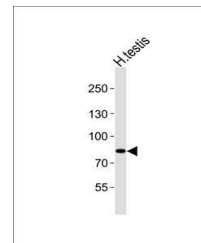
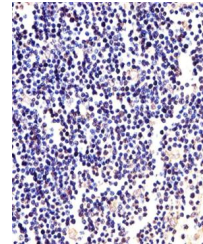


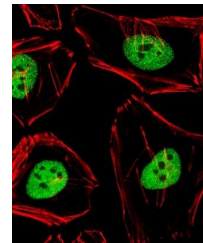
Product Datasheet

ANAPC2 antibody (orb306322)

Description	Rabbit polyclonal antibody to ANAPC2
Species/Host	Rabbit
Reactivity	Human
Conjugation	Unconjugated
Tested Applications	IF, IHC-P, WB
Target	ANAPC2
Form/Appearance	Purified polyclonal antibody supplied in PBS with 0.09% (W/V) sodium azide. This antibody is purified through a protein A column, followed by peptide affinity purification.
Storage	Maintain refrigerated at 2-8°C for up to 2 weeks. For long term storage store at -20°C in small aliquots to prevent freeze-thaw cycles
Note	For research use only
Isotype	Rabbit IgG
Clonality	Polyclonal
MW	93828
Uniprot ID	Q9UJX6
Dilution Range	IF/ICC: 1:25, IHC-P: 1:25, WB: 1:1000
Expiration Date	12 months from date of receipt.



Western blot analysis of human testis ti...



Immunofluorescence analysis of Human Cer...