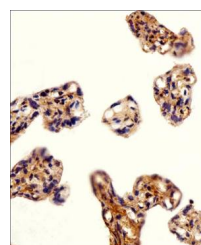
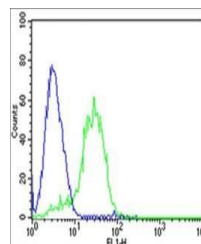


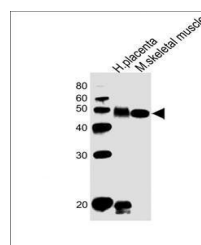
Product Datasheet

DLK1 antibody (orb306205)

Description	Rabbit polyclonal antibody to DLK1
Species/Host	Rabbit
Reactivity	Human, Mouse
Conjugation	Unconjugated
Tested Applications	FC, IHC-P, WB
Target	DLK1
Form/Appearance	Purified polyclonal antibody supplied in PBS with 0.09% (W/V) sodium azide. This antibody is purified through a protein A column, followed by peptide affinity purification.
Storage	Maintain refrigerated at 2-8°C for up to 2 weeks. For long term storage store at -20°C in small aliquots to prevent freeze-thaw cycles
Note	For research use only
Isotype	Rabbit IgG
Clonality	Polyclonal
MW	41300
Uniprot ID	P80370
Dilution Range	WB: 1:1000, FACS: 1:25, IHC-P: 1:25
Expiration Date	12 months from date of receipt.



Immunohistochemical staining of paraffin...



Western blot analysis of All lanes using ...