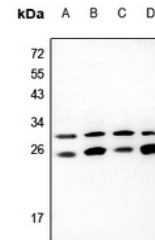


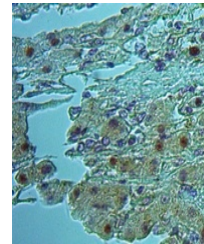
Product Datasheet

EIF3K antibody (orb304746)

Description	Rabbit polyclonal antibody to EIF3K
Species/Host	Rabbit
Reactivity	Human, Mouse, Porcine, Primate, Rabbit, Rat, Sheep
Conjugation	Unconjugated
Tested Applications	IH, WB
Immunogen	KLH-conjugated synthetic peptide encompassing a sequence within the center region of human EIF3K. The exact sequence is proprietary.
Target	EIF3K
Preservatives	Liquid in 0.42% Potassium phosphate, 0.87% Sodium chloride, pH 7.3, 30% glycerol, and 0.01% sodium azide.
Form/Appearance	Liquid in 0.42% Potassium phosphate, 0.87% Sodium chloride, pH 7.3, 30% glycerol, and 0.01% sodium azide.
Storage	Maintain refrigerated at 2-8°C for up to 2 weeks. For long term storage store at -20°C in small aliquots to prevent freeze-thaw cycles.
Note	For research use only
Clonality	Polyclonal
Source	Rabbit
Uniprot ID	Q9DBZ5 , Q9UBQ5
Entrez	73830 , 27335
Dilution Range	WB: 1:500-1000
Expiration Date	12 months from date of receipt.



Western blot analysis of EIF3K expression...



Immunohistochemical analysis of EIF3K staining...