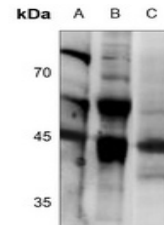


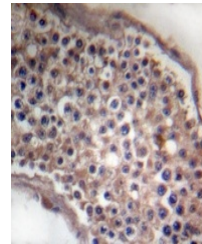
Product Datasheet

Ephrin B1/2 antibody (orb304742)

Description	Rabbit polyclonal antibody to Ephrin B1/2
Species/Host	Rabbit
Reactivity	Human, Mouse, Rat, Zebrafish
Conjugation	Unconjugated
Tested Applications	IH, WB
Immunogen	KLH-conjugated synthetic peptide encompassing a sequence within the C-term region of human Ephrin B1/2. The exact sequence is proprietary.
Target	EFNB1; EFNB2
Preservatives	Liquid in 0.42% Potassium phosphate, 0.87% Sodium chloride, pH 7.3, 30% glycerol, and 0.01% sodium azide.
Form/Appearance	Liquid in 0.42% Potassium phosphate, 0.87% Sodium chloride, pH 7.3, 30% glycerol, and 0.01% sodium azide.
Storage	Maintain refrigerated at 2-8°C for up to 2 weeks. For long term storage store at -20°C in small aliquots to prevent freeze-thaw cycles.
Note	For research use only
Clonality	Polyclonal
Source	Rabbit
Uniprot ID	P52796 , P52800 , P52799 , P98172 , P52795
Entrez	1948 , 13641 , 13642 , 1947
Dilution Range	WB: 1:500-1000
Expiration Date	12 months from date of receipt.



Western blot analysis of Ephrin B1/2 exp...



Immunohistochemical analysis of Ephrin B...