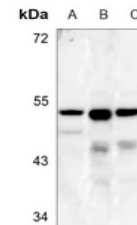


Product Datasheet

CLN5 antibody (orb304726)

Description	Rabbit polyclonal antibody to CLN5
Species/Host	Rabbit
Reactivity	Human, Mouse, Rat, Sheep
Conjugation	Unconjugated
Tested Applications	WB
Immunogen	KLH-conjugated synthetic peptide encompassing a sequence within the center region of human CLN5. The exact sequence is proprietary.
Target	CLN5
Preservatives	Liquid in 0.42% Potassium phosphate, 0.87% Sodium chloride, pH 7.3, 30% glycerol, and 0.01% sodium azide.
Form/Appearance	Liquid in 0.42% Potassium phosphate, 0.87% Sodium chloride, pH 7.3, 30% glycerol, and 0.01% sodium azide.
Storage	Maintain refrigerated at 2-8°C for up to 2 weeks. For long term storage store at -20°C in small aliquots to prevent freeze-thaw cycles.
Note	For research use only
Clonality	Polyclonal
Source	Rabbit
Uniprot ID	Q3UMW8 , O75503
Entrez	211286 , 1203
Dilution Range	WB: 1:500-1000
Expiration Date	12 months from date of receipt.



Western blot analysis of CLN5 expression...