

---

## Product Datasheet

### IKK alpha/beta (phospho-S176/177) antibody (orb304723)

**Description**

Rabbit polyclonal antibody to IKK alpha/beta

 kDa A B C  
200

**Species/Host**

Rabbit

**Reactivity**

Human, Mouse, Porcine, Primate, Rat, Zebrafish

**Conjugation**

Unconjugated

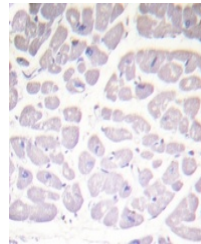
**Tested Applications**

IH, WB

Western blot analysis of IKK alpha/beta ...

**Immunogen**

KLH-conjugated synthetic phosphopeptide corresponding to residues surrounding S176/177 of human IKK alpha/beta protein. The exact sequence is proprietary.


**Target**

CHUK; IKKKB

**Preservatives**

Liquid in 0.42% Potassium phosphate, 0.87% Sodium chloride, pH 7.3, 30% glycerol, and 0.01% sodium azide.

Immunohistochemical analysis of IKK alph...

**Form/Appearance**

Liquid in 0.42% Potassium phosphate, 0.87% Sodium chloride, pH 7.3, 30% glycerol, and 0.01% sodium azide.

**Storage**

Maintain refrigerated at 2-8°C for up to 2 weeks. For long term storage store at -20°C in small aliquots to prevent freeze-thaw cycles.

**Note**

For research use only

**Clonality**

Polyclonal

**Source**

Rabbit

**Uniprot ID**
[O88351](#), [Q9QY78](#), [O15111](#), [O14920](#), [Q60680](#)
**Entrez**
[1147](#), [3551](#), [16150](#), [84351](#)
**Dilution Range**

WB: 1:500-1000

**Expiration Date**

12 months from date of receipt.