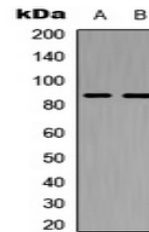


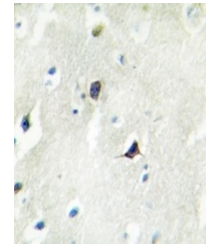
Product Datasheet

Cadherin 7 antibody (orb304719)

Description	Rabbit polyclonal antibody to Cadherin 7
Species/Host	Rabbit
Reactivity	Human, Mouse, Rat
Conjugation	Unconjugated
Tested Applications	IF, IH, WB
Immunogen	KLH-conjugated synthetic peptide encompassing a sequence within the C-term region of human Cadherin 7. The exact sequence is proprietary.
Target	CDH7
Preservatives	Liquid in 0.42% Potassium phosphate, 0.87% Sodium chloride, pH 7.3, 30% glycerol, and 0.01% sodium azide.
Form/Appearance	Liquid in 0.42% Potassium phosphate, 0.87% Sodium chloride, pH 7.3, 30% glycerol, and 0.01% sodium azide.
Storage	Maintain refrigerated at 2-8°C for up to 2 weeks. For long term storage store at -20°C in small aliquots to prevent freeze-thaw cycles.
Note	For research use only
Clonality	Polyclonal
Source	Rabbit
Uniprot ID	Q8BM92 , Q9ULB5 , Q5DWV2
Entrez	1005 , 241201 , 29162
Dilution Range	WB: 1:500-1000
Expiration Date	12 months from date of receipt.



Western blot analysis of Cadherin 7 expr...



Immunohistochemical analysis of Cadherin...



Immunofluorescent analysis of Cadherin 7...