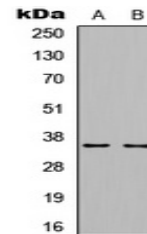


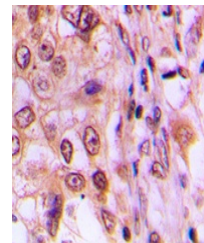
Product Datasheet

Cyclin D1 (phospho-T286) antibody (orb304712)

Description	Rabbit polyclonal antibody to Cyclin D1 (phospho-T286)
Species/Host	Rabbit
Reactivity	Human, Rat
Conjugation	Unconjugated
Tested Applications	IH, WB
Immunogen	KLH-conjugated synthetic phosphopeptide corresponding to residues surrounding T286 of human Cyclin D1 protein. The exact sequence is proprietary.
Target	CCND1
Preservatives	Liquid in 0.42% Potassium phosphate, 0.87% Sodium chloride, pH 7.3, 30% glycerol, and 0.01% sodium azide.
Form/Appearance	Liquid in 0.42% Potassium phosphate, 0.87% Sodium chloride, pH 7.3, 30% glycerol, and 0.01% sodium azide.
Storage	Maintain refrigerated at 2-8°C for up to 2 weeks. For long term storage store at -20°C in small aliquots to prevent freeze-thaw cycles.
Note	For research use only
Clonality	Polyclonal
Source	Rabbit
Uniprot ID	P25322 , P39948 , P24385
Entrez	12443 , 595 , 58919
Dilution Range	WB: 1:500-1000, IHC-P: 1:100-200
Expiration Date	12 months from date of receipt.



Western blot analysis of Cyclin D1 (Phos...



Immunohistochemical analysis of Cyclin D...