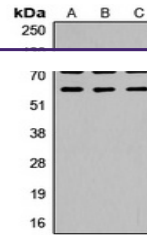

Product Datasheet

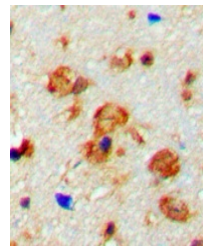
CaMK2 beta/gamma (phospho-T287) antibody (orb304707)

Description

Rabbit polyclonal antibody to CaMK2



Western blot analysis of CaMK2 beta/gamm...



Immunohistochemical analysis of CaMK2 be...

Species/Host

Rabbit

Reactivity

Human, Mouse, Porcine, Primate, Rabbit, Rat

Conjugation

Unconjugated

Tested Applications

IH, WB

Immunogen

KLH-conjugated synthetic phosphopeptide corresponding to residues surrounding T287 of human CaMK2 beta/gamma protein. The exact sequence is proprietary.

Target

CAMK2B; CAMK2G

Preservatives

Liquid in 0.42% Potassium phosphate, 0.87% Sodium chloride, pH 7.3, 30% glycerol, and 0.01% sodium azide.

Form/Appearance

Liquid in 0.42% Potassium phosphate, 0.87% Sodium chloride, pH 7.3, 30% glycerol, and 0.01% sodium azide.

Storage

Maintain refrigerated at 2-8°C for up to 2 weeks. For long term storage store at -20°C in small aliquots to prevent freeze-thaw cycles.

Note

For research use only

Clonality

Polyclonal

Source

Rabbit

Uniprot ID
[P11730](#), [Q13555](#), [P08413](#), [Q923T9](#), [P28652](#), [Q13554](#)
Entrez
[816](#), [818](#), [12323](#), [24245](#), [171140](#), [12325](#)
Dilution Range

WB: 1:500-1000, IHC-P: 1:100-200

Expiration Date

12 months from date of receipt.