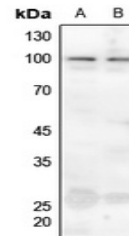


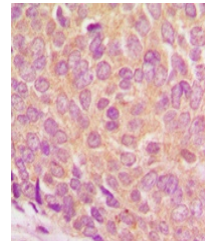
Product Datasheet

Ataxin 1 (phospho-S775) antibody (orb304691)

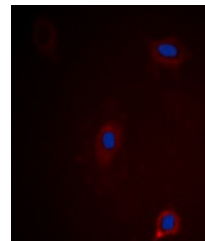
| | |
|----------------------------|--------------------------------------------------------------------------------------------------------------------------------------------------|
| Description | Rabbit polyclonal antibody to Ataxin 1 (phospho-S775) |
| Species/Host | Rabbit |
| Reactivity | Human, Mouse, Rat |
| Conjugation | Unconjugated |
| Tested Applications | IF, IH, WB |
| Immunogen | KLH-conjugated synthetic phosphopeptide corresponding to residues surrounding S775 of human Ataxin 1 protein. The exact sequence is proprietary. |
| Target | ATXN1 |
| Preservatives | Liquid in 0.42% Potassium phosphate, 0.87% Sodium chloride, pH 7.3, 30% glycerol, and 0.01% sodium azide. |
| Form/Appearance | Liquid in 0.42% Potassium phosphate, 0.87% Sodium chloride, pH 7.3, 30% glycerol, and 0.01% sodium azide. |
| Storage | Maintain refrigerated at 2-8°C for up to 2 weeks. For long term storage store at -20°C in small aliquots to prevent freeze-thaw cycles. |
| Note | For research use only |
| Clonality | Polyclonal |
| Source | Rabbit |
| Uniprot ID | Q63540 , P54254 , P54253 |
| Entrez | 20238 , 6310 , 25049 |
| Dilution Range | WB: 1:500-1000, IHC-P: 1:100-200, IF/ICC: 1:100-500 |
| Expiration Date | 12 months from date of receipt. |



Western blot analysis of Ataxin 1 (Phospho-S775)



Immunohistochemical analysis of Ataxin 1



Immunofluorescent analysis of Ataxin 1