
Product Datasheet

AKT (phospho-S473) antibody (orb304681)

Description

Rabbit polyclonal antibody to AKT (phospho-

Species/Host

Rabbit

Reactivity

Bovine, Gallus, Human, Mouse, Porcine, Rat, Zebrafish

Conjugation

Unconjugated

Tested Applications

IF, IH, WB

Immunogen

KLH-conjugated synthetic phosphopeptide corresponding to residues surrounding S473 of human AKT protein. The exact sequence is proprietary.

Target

AKT1; AKT2; AKT3

Preservatives

Liquid in 0.42% Potassium phosphate, 0.87% Sodium chloride, pH 7.3, 30% glycerol, and 0.01% sodium azide.

Form/Appearance

Liquid in 0.42% Potassium phosphate, 0.87% Sodium chloride, pH 7.3, 30% glycerol, and 0.01% sodium azide.

Storage

Maintain refrigerated at 2-8°C for up to 2 weeks. For long term storage store at -20°C in small aliquots to prevent freeze-thaw cycles.

Note

For research use only

Clonality

Polyclonal

Source

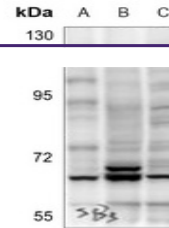
Rabbit

Uniprot ID
[P47196](#), [P31750](#), [P31749](#)
Entrez
[207](#), [24185](#), [11651](#)
Dilution Range

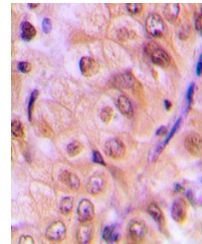
WB: 1:500-1000, IHC-P: 1:100-200, IF/ICC: 1:100-500

Expiration Date

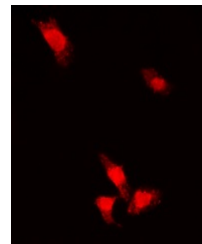
12 months from date of receipt.



Western blot analysis of AKT (Phospho-S473)



Immunohistochemical analysis of AKT (Phospho-S473)



Immunofluorescent analysis of AKT (Phospho-S473)