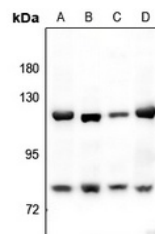


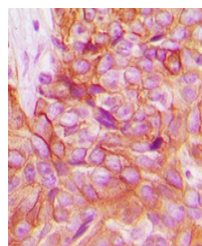
Product Datasheet

Alpha-adducin antibody (orb304678)

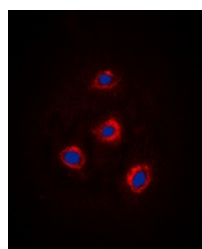
Description	Rabbit polyclonal antibody to Alpha-adducin
Species/Host	Rabbit
Reactivity	Human, Mouse, Rat
Conjugation	Unconjugated
Tested Applications	IF, IH, IP, WB
Immunogen	KLH-conjugated synthetic peptide encompassing a sequence within the C-term region of human Alpha-adducin. The exact sequence is proprietary.
Target	ADD1; ADD2
Preservatives	Liquid in 0.42% Potassium phosphate, 0.87% Sodium chloride, pH 7.3, 30% glycerol, and 0.01% sodium azide.
Form/Appearance	Liquid in 0.42% Potassium phosphate, 0.87% Sodium chloride, pH 7.3, 30% glycerol, and 0.01% sodium azide.
Storage	Maintain refrigerated at 2-8°C for up to 2 weeks. For long term storage store at -20°C in small aliquots to prevent freeze-thaw cycles.
Note	For research use only
Clonality	Polyclonal
Source	Rabbit
Uniprot ID	Q63028 , P35612 , P35611 , Q9QYB8 , Q05764 , Q9QYC0
Entrez	11519 , 119 , 118 , 24170 , 24171 , 11518
Dilution Range	WB: 1:500-1000, IHC-P: 1:100-200, IF/ICC: 1:100-500, IP: 1:10-100
Expiration Date	12 months from date of receipt.



Western blot analysis of Alpha-adducin e...



Immunohistochemical analysis of Alpha-ad...



Immunofluorescent analysis of Alpha-addu...