
Product Datasheet

Vitamin D3 Receptor (phospho-S208) antibody (orb304658)

Description

Rabbit polyclonal antibody to Vitamin D3

Species/Host

Rabbit

Reactivity

Human, Primate

Conjugation

Unconjugated

Tested Applications

IF, WB

Immunogen

KLH-conjugated synthetic phosphopeptide corresponding to residues surrounding S208 of human VDR protein. The exact sequence is proprietary.

Target

VDR

Preservatives

Liquid in 0.42% Potassium phosphate, 0.87% Sodium chloride, pH 7.3, 30% glycerol, and 0.01% sodium azide.

Form/Appearance

Liquid in 0.42% Potassium phosphate, 0.87% Sodium chloride, pH 7.3, 30% glycerol, and 0.01% sodium azide.

Storage

Maintain refrigerated at 2-8°C for up to 2 weeks. For long term storage store at -20°C in small aliquots to prevent freeze-thaw cycles.

Note

For research use only

Clonality

Polyclonal

Source

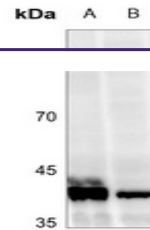
Rabbit

Uniprot ID
[P11473](#), [P13053](#), [P48281](#)
Entrez
[24873](#), [22337](#), [7421](#)
Dilution Range

WB: 1:500-1000, IF/ICC: 1:100-500

Expiration Date

12 months from date of receipt.



Western blot analysis of VDR (Phospho-S208)



Immunofluorescent analysis of VDR (Phospho-S208)