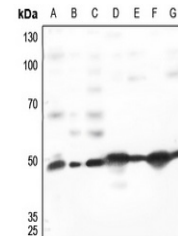


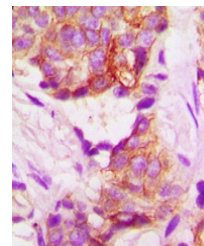
Product Datasheet

TACSTD2 antibody (orb304619)

| | |
|----------------------------|--|
| Description | Rabbit polyclonal antibody to TACSTD2 |
| Species/Host | Rabbit |
| Reactivity | Human, Mouse, Porcine, Rat |
| Conjugation | Unconjugated |
| Tested Applications | IF, IH, WB |
| Immunogen | KLH-conjugated synthetic peptide encompassing a sequence within the center region of human TACSTD2. The exact sequence is proprietary. |
| Target | TACSTD2 |
| Preservatives | Liquid in 0.42% Potassium phosphate, 0.87% Sodium chloride, pH 7.3, 30% glycerol, and 0.01% sodium azide. |
| Form/Appearance | Liquid in 0.42% Potassium phosphate, 0.87% Sodium chloride, pH 7.3, 30% glycerol, and 0.01% sodium azide. |
| Storage | Shipped at 4°C. Upon delivery aliquot and store at -20°C for one year. Avoid freeze/thaw cycles. |
| Note | For research use only |
| Clonality | Polyclonal |
| Source | Rabbit |
| Uniprot ID | P09758 , Q8BGV3 , Q6P9Z6 |
| Entrez | 494343 , 4070 , 56753 |
| Dilution Range | WB: 1:500-1000, IHC-P: 1:100-200, IF/ICC: 1:100-500 |
| Expiration Date | 12 months from date of receipt. |

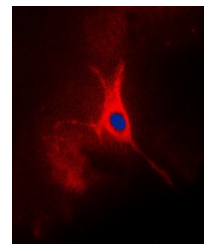


Western blot analysis of TACSTD2 express...



Immunohistochemical analysis of TACSTD2

...



Immunofluorescent analysis of TACSTD2 st...