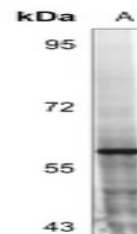


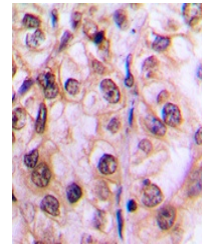
Product Datasheet

MST1/2 (phospho-T183) antibody (orb304612)

Description	Rabbit polyclonal antibody to MST1/2 (phospho-T183)
Species/Host	Rabbit
Reactivity	Human, Mouse, Porcine, Rat, Zebrafish
Conjugation	Unconjugated
Tested Applications	IH, WB
Immunogen	KLH-conjugated synthetic phosphopeptide corresponding to residues surrounding T183 of human MST1/2 protein. The exact sequence is proprietary.
Target	STK3; STK4
Preservatives	Liquid in 0.42% Potassium phosphate, 0.87% Sodium chloride, pH 7.3, 30% glycerol, and 0.01% sodium azide.
Form/Appearance	Liquid in 0.42% Potassium phosphate, 0.87% Sodium chloride, pH 7.3, 30% glycerol, and 0.01% sodium azide.
Storage	Maintain refrigerated at 2-8°C for up to 2 weeks. For long term storage store at -20°C in small aliquots to prevent freeze-thaw cycles.
Note	For research use only
Clonality	Polyclonal
Source	Rabbit
Uniprot ID	Q9JI10 , O54748 , Q13188 , Q13043 , Q9JI11
Entrez	58231 , 56274 , 6789 , 65189
Dilution Range	WB: 1:500-1000, IHC-P: 1:100-200
Expiration Date	12 months from date of receipt.



Western blot analysis of MST1/2 (Phospho-T183)



Immunohistochemical analysis of MST1/2 (Phospho-T183)