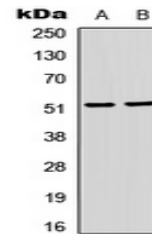


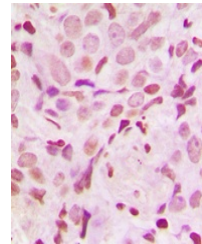
Product Datasheet

SRF (phospho-S103) antibody (orb304607)

Description	Rabbit polyclonal antibody to SRF (phospho-S103)
Species/Host	Rabbit
Reactivity	Human, Mouse
Conjugation	Unconjugated
Tested Applications	EMSA, IH, WB
Immunogen	KLH-conjugated synthetic phosphopeptide corresponding to residues surrounding S103 of human SRF protein. The exact sequence is proprietary.
Target	SRF
Preservatives	Liquid in 0.42% Potassium phosphate, 0.87% Sodium chloride, pH 7.3, 30% glycerol, and 0.01% sodium azide.
Form/Appearance	Liquid in 0.42% Potassium phosphate, 0.87% Sodium chloride, pH 7.3, 30% glycerol, and 0.01% sodium azide.
Storage	Maintain refrigerated at 2-8°C for up to 2 weeks. For long term storage store at -20°C in small aliquots to prevent freeze-thaw cycles.
Note	For research use only
Clonality	Polyclonal
Source	Rabbit
Uniprot ID	Q9JM73, P11831
Entrez	6722, 20807
Dilution Range	WB: 1:500-1000, IHC-P: 1:100-200
Expiration Date	12 months from date of receipt.



Western blot analysis of SRF (Phospho-S103)



Immunohistochemical analysis of SRF (Phospho-S103)