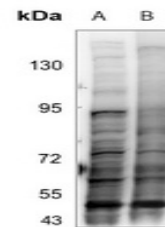


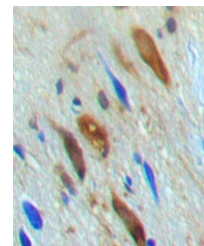
Product Datasheet

SMAD3 (phospho-T179) antibody (orb304595)

Description	Rabbit polyclonal antibody against Smad3
Species/Host	Rabbit
Reactivity	Human, Mouse, Porcine, Primate, Rat, Sheep
Conjugation	Unconjugated
Tested Applications	IH, WB
Immunogen	KLH-conjugated synthetic phosphopeptide corresponding to residues surrounding T179 of human SMAD3 protein. The exact sequence is proprietary.
Target	SMAD3
Preservatives	Liquid in 0.42% Potassium phosphate, 0.87% Sodium chloride, pH 7.3, 30% glycerol, and 0.01% sodium azide.
Form/Appearance	Liquid in 0.42% Potassium phosphate, 0.87% Sodium chloride, pH 7.3, 30% glycerol, and 0.01% sodium azide.
Storage	Maintain refrigerated at 2-8°C for up to 2 weeks. For long term storage store at -20°C in small aliquots to prevent freeze-thaw cycles.
Note	For research use only
Clonality	Polyclonal
Source	Rabbit
Uniprot ID	P84022, Q8BUN5, P84025
Entrez	4088, 17127, 25631
Dilution Range	WB: 1:500-1000, IHC-P: 1:100-200
Expiration Date	12 months from date of receipt.



Western blot analysis of SMAD3 (Phospho-...



Immunohistochemical analysis of SMAD3 (P...