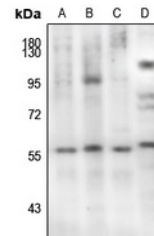


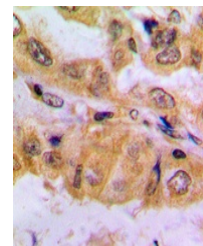
Product Datasheet

Smad2 (phospho-S467) antibody (orb304593)

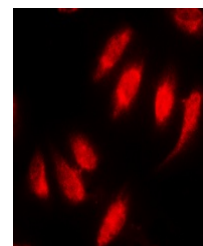
Description	Rabbit polyclonal antibody against Smad2
Species/Host	Rabbit
Reactivity	Human, Mouse, Porcine, Primate, Rabbit, Rat, Sheep, Zebrafish
Conjugation	Unconjugated
Tested Applications	ELISA, IF, IH, WB
Immunogen	KLH-conjugated synthetic phosphopeptide corresponding to residues surrounding S467 of human SMAD2 protein. The exact sequence is proprietary.
Target	SMAD2
Preservatives	Liquid in 0.42% Potassium phosphate, 0.87% Sodium chloride, pH 7.3, 30% glycerol, and 0.01% sodium azide.
Form/Appearance	Liquid in 0.42% Potassium phosphate, 0.87% Sodium chloride, pH 7.3, 30% glycerol, and 0.01% sodium azide.
Storage	Maintain refrigerated at 2-8°C for up to 2 weeks. For long term storage store at -20°C in small aliquots to prevent freeze-thaw cycles.
Note	For research use only
Clonality	Polyclonal
Source	Rabbit
Uniprot ID	O70436 , Q62432 , Q15796
Entrez	29357 , 17126 , 4087
Dilution Range	ELISA: 1:5000-10000, WB: 1:500-1000, IHC-P: 1:100-200, IF/ICC: 1:100-500
Expiration Date	12 months from date of receipt.



Western blot analysis of SMAD2 (Phospho-
...



Immunohistochemical analysis of SMAD2 (P...
(P...



Immunofluorescent analysis of SMAD2 (Pho...
(Pho...