

---

## Product Datasheet

### SMAD1/9 (phospho-S465/467) antibody (orb304592)

**Description**

Rabbit polyclonal antibody to SMAD1/9

**Species/Host**

Rabbit

**Reactivity**

Human, Mouse, Rat, Zebrafish

**Conjugation**

Unconjugated

**Tested Applications**

IH, WB

**Immunogen**

KLH-conjugated synthetic phosphopeptide corresponding to residues surrounding S465/467 of human SMAD1/9 protein. The exact sequence is proprietary.

**Target**

SMAD1; SMAD9

**Preservatives**

Liquid in 0.42% Potassium phosphate, 0.87% Sodium chloride, pH 7.3, 30% glycerol, and 0.01% sodium azide.

**Form/Appearance**

Liquid in 0.42% Potassium phosphate, 0.87% Sodium chloride, pH 7.3, 30% glycerol, and 0.01% sodium azide.

**Storage**

Maintain refrigerated at 2-8°C for up to 2 weeks. For long term storage store at -20°C in small aliquots to prevent freeze-thaw cycles.

**Note**

For research use only

**Clonality**

Polyclonal

**Source**

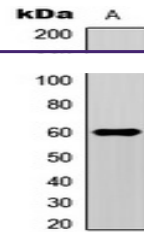
Rabbit

**Uniprot ID**
[Q15797](#), [P70340](#), [O15198](#), [P97588](#)
**Entrez**
[4086](#), [17125](#)
**Dilution Range**

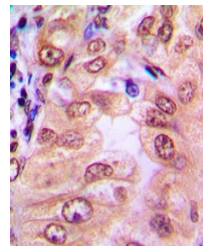
WB: 1:500-1000, IHC-P: 1:100-200

**Expiration Date**

12 months from date of receipt.



Western blot analysis of SMAD1/9 (Phospho...)



Immunohistochemical analysis of SMAD1/9

...