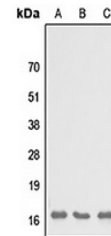


Product Datasheet

SH3BGRL3 antibody (orb304583)

Description	Rabbit polyclonal antibody to SH3BGRL3
Species/Host	Rabbit
Reactivity	Human, Mouse, Primate, Rabbit, Rat
Conjugation	Unconjugated
Tested Applications	WB
Immunogen	KLH-conjugated synthetic peptide encompassing a sequence within the center region of human SH3BGRL3. The exact sequence is proprietary.
Target	SH3BGRL3
Preservatives	Liquid in 0.42% Potassium phosphate, 0.87% Sodium chloride, pH 7.3, 30% glycerol, and 0.01% sodium azide.
Form/Appearance	Liquid in 0.42% Potassium phosphate, 0.87% Sodium chloride, pH 7.3, 30% glycerol, and 0.01% sodium azide.
Storage	Shipped at 4°C. Upon delivery aliquot and store at -20°C for one year. Avoid freeze/thaw cycles.
Note	For research use only
Clonality	Polyclonal
Source	Rabbit
Uniprot ID	Q9H299 , Q91VW3
Entrez	83442 , 73723
Dilution Range	WB: 1:500-1000
Expiration Date	12 months from date of receipt.



Western blot analysis of SH3BGRL3 expres...