
Product Datasheet

SGK1/2 (phospho-T256/253) antibody (orb304579)

Description

Rabbit polyclonal antibody to SGK1/2

Species/Host

Rabbit

Reactivity

Human, Mouse, Rabbit, Rat, Zebrafish

Conjugation

Unconjugated

Tested Applications

IF, IH, WB

Immunogen

KLH-conjugated synthetic phosphopeptide corresponding to residues surrounding T256/253 of human SGK1/2 protein. The exact sequence is proprietary.

Target

SGK1

Preservatives

Liquid in 0.42% Potassium phosphate, 0.87% Sodium chloride, pH 7.3, 30% glycerol, and 0.01% sodium azide.

Form/Appearance

Liquid in 0.42% Potassium phosphate, 0.87% Sodium chloride, pH 7.3, 30% glycerol, and 0.01% sodium azide.

Storage

Shipped at 4°C. Upon delivery aliquot and store at -20°C for one year. Avoid freeze/thaw cycles.

Note

For research use only

Clonality

Polyclonal

Source

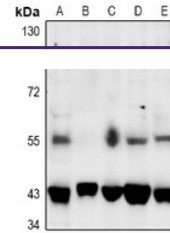
Rabbit

Uniprot ID
[Q06226](#), [Q9HBY8](#), [Q9WVC6](#), [Q9QZS5](#), [Q8R4U9](#), [O00141](#)
Entrez
[171497](#), [27219](#), [10110](#), [6446](#), [20393](#)
Dilution Range

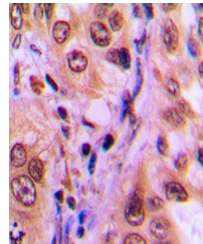
WB: 1:500-1000, IHC-P: 1:100-200, IF/ICC: 1:100-500

Expiration Date

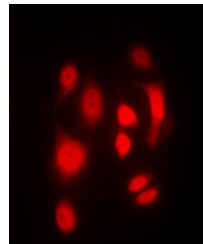
12 months from date of receipt.



Western blot analysis of SGK1/2 (Phospho...



Immunohistochemical analysis of SGK1/2 (...



Immunofluorescent analysis of SGK1/2 (Ph...