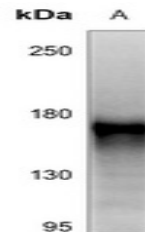


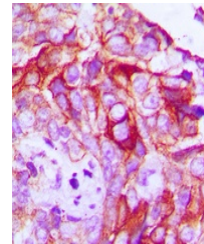
Product Datasheet

RET (phospho-Y1062) antibody (orb304551)

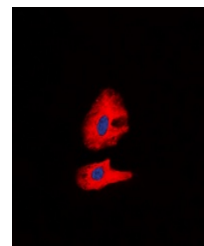
Description	Rabbit polyclonal antibody to RET (phospho-Y1062)
Species/Host	Rabbit
Reactivity	Human, Mouse, Primate, Rat
Conjugation	Unconjugated
Tested Applications	IF, IH, WB
Immunogen	KLH-conjugated synthetic phosphopeptide corresponding to residues surrounding Y1062 of human RET protein. The exact sequence is proprietary.
Target	RET
Preservatives	Liquid in 0.42% Potassium phosphate, 0.87% Sodium chloride, pH 7.3, 30% glycerol, and 0.01% sodium azide.
Form/Appearance	Liquid in 0.42% Potassium phosphate, 0.87% Sodium chloride, pH 7.3, 30% glycerol, and 0.01% sodium azide.
Storage	Shipped at 4°C. Upon delivery aliquot and store at -20°C for one year. Avoid freeze/thaw cycles.
Note	For research use only
Clonality	Polyclonal
Source	Rabbit
Uniprot ID	P35546, P07949, G3V9H8
Entrez	24716, 5979, 19713
Dilution Range	WB: 1:500-1000, IHC-P: 1:100-200, IF/ICC: 1:100-500
Expiration Date	12 months from date of receipt.



Western blot analysis of RET (Phospho-Y1062)



Immunohistochemical analysis of RET (Phospho-Y1062)



Immunofluorescent analysis of RET (Phospho-Y1062)