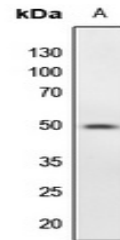


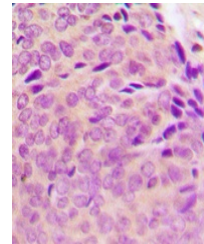
Product Datasheet

PTP1B (phospho-S50) antibody (orb304530)

| | |
|----------------------------|--|
| Description | Rabbit polyclonal antibody to PTP1B (phospho-S50) |
| Species/Host | Rabbit |
| Reactivity | Human, Mouse, Porcine, Primate, Rat, Zebrafish |
| Conjugation | Unconjugated |
| Tested Applications | IH, WB |
| Immunogen | KLH-conjugated synthetic phosphopeptide corresponding to residues surrounding S50 of human PTP1B protein. The exact sequence is proprietary. |
| Target | PTPN1 |
| Preservatives | Liquid in 0.42% Potassium phosphate, 0.87% Sodium chloride, pH 7.3, 30% glycerol, and 0.01% sodium azide. |
| Form/Appearance | Liquid in 0.42% Potassium phosphate, 0.87% Sodium chloride, pH 7.3, 30% glycerol, and 0.01% sodium azide. |
| Storage | Maintain refrigerated at 2-8°C for up to 2 weeks. For long term storage store at -20°C in small aliquots to prevent freeze-thaw cycles. |
| Note | For research use only |
| Clonality | Polyclonal |
| Source | Rabbit |
| Uniprot ID | P18031, P35821, P20417 |
| Entrez | 24697, 5770, 19246 |
| Dilution Range | WB: 1:500-1000, IHC-P: 1:100-200 |
| Expiration Date | 12 months from date of receipt. |



Western blot analysis of PTP1B (Phospho-S50)



Immunohistochemical analysis of PTP1B (Phospho-S50)