
Product Datasheet

Fibrinopeptide B antibody (orb304508)

Description

Fibrinopeptide B antibody

Species/Host

Rabbit

Reactivity

Human, Mouse, Rat

Conjugation

Unconjugated

Tested Applications

ELISA, ICC, IF, IHC-P, WB

Immunogen

KLH conjugated synthetic peptide derived from human Fibrinopeptide B. Please contact us for the exact immunogen sequence. The peptide is available as orb374885.

Target

Fibrinopeptide B

Form/Appearance

10 mM PBS, 0.02% sodium azide

Concentration

- 100 µg (in 200 µl): 0.5 mg/ml- 200 µg (in 400 µl): 0.5 mg/ml

Storage

Store at 4°C for up to two weeks. For long term storage, aliquot and store at -20°C, avoid freeze/thaw cycles.

Note

For research use only

Isotype

IgG

Clonality

Polyclonal

Purity

Polyclonal antibodies are purified by peptide affinity chromatography

MW

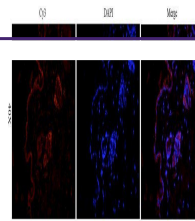
90 kDa

Uniprot ID
[Q8K0E8](#), [P14480](#), [P02675](#)
NCBI
[005132](#), [005141](#)
Entrez
[2244](#)
Dilution Range

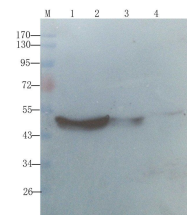
IF/ICC: 1:200, IHC-P: 1:200, WB: 1:200-1000

Expiration Date

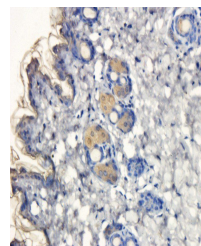
12 months from date of receipt.



Immunofluorescence image of mouse skin t...



Western blot analysis of mouse kidney ly...



Immunohistochemical staining of paraffin...