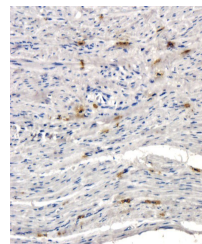


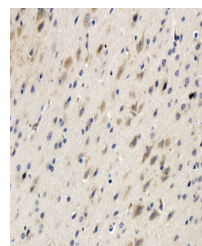
Product Datasheet

Factor VIII antibody (orb304040)

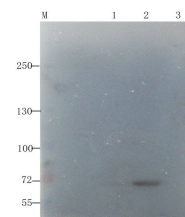
Description	Factor VIII antibody
Species/Host	Rabbit
Reactivity	Human, Mouse, Rat
Conjugation	Unconjugated
Tested Applications	ELISA, IHC-P, WB
Immunogen	KLH conjugated synthetic peptide derived from human Factor VIII. Please contact us for the exact immunogen sequence. The peptide is available as orb374883.
Target	Factor VIII
Form/Appearance	10 mM PBS, 0.02% sodium azide
Concentration	- 100 µg (in 200 µl): 0.5 mg/ml- 200 µg (in 400 µl): 0.5 mg/ml
Storage	Store at 4°C for up to two weeks. For long term storage, aliquot and store at -20°C, avoid freeze/thaw cycles.
Note	For research use only
Isotype	IgG
Clonality	Polyclonal
Purity	Polyclonal antibodies are purified by peptide affinity chromatography
Uniprot ID	P00451, B2RRC9
Entrez	2157
Dilution Range	WB: 1:200-1000, IHC-P: 1:100-500 (based on 0.5 mg/ml)
Expiration Date	12 months from date of receipt.



Immunohistochemical staining of human en...



IHC-P image of mouse brain tissue using ...



Western blot analysis of human thyroid c...