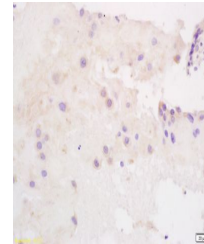


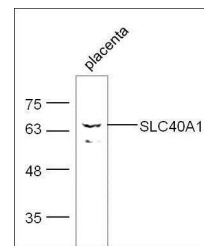
Product Datasheet

SLC40A1 antibody (orb3029)

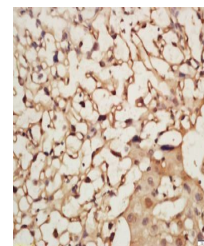
Description	SLC40A1 antibody
Species/Host	Rabbit
Reactivity	Human
Conjugation	Unconjugated
Tested Applications	WB
Immunogen	KLH conjugated synthetic peptide derived from human SLC40A1/FPN1 (331-430/571 aa)
Target	SLC40A1
Preservatives	0.01M TBS(pH7.4) with 1% rAlbumin, 0.03% Proclin300 and 50% Glycerol.
Form/Appearance	Liquid
Concentration	1mg/ml
Storage	Shipped at 4°C. Store at -20 °C for one year. Avoid repeated freeze/thaw cycles.
Note	For research use only
Isotype	IgG
Clonality	Polyclonal
MW	63 kDa
Uniprot ID	Q9NP59
Dilution Range	WB=1:500-2000
Expiration Date	12 months from date of receipt.



Immunohistochemical staining of human pl...



Western blot analysis of extracts from p...



Immunohistochemical staining of Mouse pl...