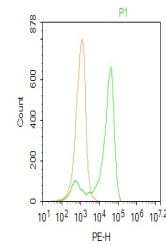


Product Datasheet

CXorf21 antibody (orb3009)

Description	CXorf21 antibody
Species/Host	Rabbit
Reactivity	Human
Conjugation	Unconjugated
Tested Applications	FC
Immunogen	KLH conjugated synthetic peptide derived from human CXorf21 (151-250/301 aa)
Target	CXorf21
Preservatives	0.01M TBS(pH7.4) with 1% rAlbumin, 0.03% Proclin300 and 50% Glycerol.
Form/Appearance	Liquid
Concentration	1mg/ml
Storage	Shipped at 4°C. Store at -20 °C for one year. Avoid repeated freeze/thaw cycles.
Note	For research use only
Isotype	IgG
Clonality	Polyclonal
MW	34 kDa
Uniprot ID	Q9HAI6
Dilution Range	Flow-Cyt=2ug/Test
Expiration Date	12 months from date of receipt.



Blank control:
U937.
Primary
Antibody (g...