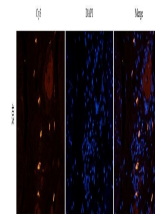


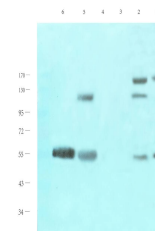
Product Datasheet

eNOS antibody (orb29800)

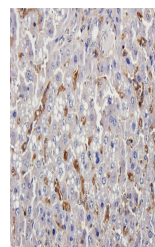
Description	eNOS antibody
Species/Host	Rabbit
Reactivity	Guinea pig, Human, Mouse, Porcine, Rat
Conjugation	Unconjugated
Tested Applications	ICC, IF, IHC-P, WB
Immunogen	KLH conjugated synthetic peptide derived from human eNOS. Please contact us for the exact immunogen sequence. The peptide is available as orb12926.
Target	eNOS
Form/Appearance	10 mM PBS, 0.02% sodium azide
Storage	Store at 2-8°C for up to 6 months. For long term storage store at -20°C in small aliquots to prevent freeze-thaw cycles.
Note	For research use only
Isotype	IgG
Clonality	Polyclonal
Purity	Polyclonal antibodies are purified by peptide affinity chromatography
MW	133 kDa
Uniprot ID	P29474
NCBI	41 , 000594 , 000603 , 21
Entrez	4846
Dilution Range	IF/ICC: 1:100-500, IHC-P: 1:100-500, WB: 1:200-1000
Expiration Date	12 months from date of receipt.



IF analysis of pig uterus tissue using eNOS antibody



Western blot analysis of mouse spleen (lane 1) using eNOS antibody



IHC-P image of rat liver tissue using eNOS antibody