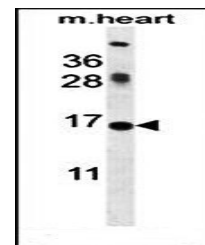
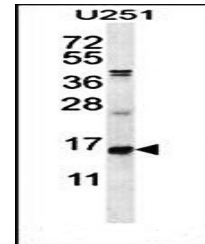


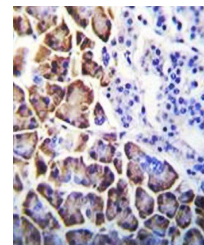
Product Datasheet

ID1 antibody (orb29690)

Description	Synthetic peptide.
Species/Host	Rabbit
Reactivity	Human, Rat
Conjugation	Unconjugated
Tested Applications	FC, IHC-P, WB
Immunogen	Synthetic Peptide
Target	ID1
Form/Appearance	Purified polyclonal antibody supplied in PBS with 0.09% (W/V) sodium azide. This antibody is purified through a protein A column, followed by peptide affinity purification.
Storage	Maintain refrigerated at 2-8°C for up to 2 weeks. For long term storage store at -20°C in small aliquots to prevent freeze-thaw cycles
Note	For research use only
Isotype	Rabbit IgG
Clonality	Polyclonal
MW	16133
Uniprot ID	P41134
NCBI	NP_851998.1 , NP_002156.2
Dilution Range	WB: 1:1000, IHC-P: 1:10-50, IF/ICC: 1:10-50, FACS: 1:10-50
Expiration Date	12 months from date of receipt.



Western blot analysis of mouse heart tis...



Immunohistochemical analysis of formalin...